



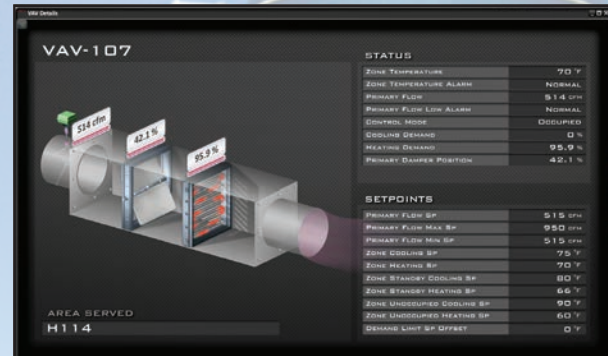
Pioneering the IoT: A Smart Partner for Smarter Buildings.

For more than 20 years, Integrated Building Solutions (IBS) has collaborated with early adopters and other innovative building professionals to create connected, sustainable smart buildings. From its roots in the building automation industry, IBS has continuously expanded its capabilities to become an IoT pioneer and full-service building controls system integrator. The company's experience in Master Systems Integration (MSI) spans every major facility system and subsystem, with a specific focus on energy performance, IT, and NOC operations.

The company's expertise in sustainable building performance led to the development of a suite of energy management software that supports sustainability at a portfolio level down to the workstation/employee (facilities) and Server (data centers/labs) across all sectors of business. This flagship building performance platform, Intelligent Building Information System (IBIS), has been deployed in more than 24 million square feet of government, educational, financial services, and commercial real estate facilities, including numerous Fortune 50 and 100 enterprises.

IBIS At a Glance

IBIS is an open-protocol, vendor-agnostic, comprehensive suite that combines software modules with the expert services necessary to integrate and analyze building systems—HVAC, Lighting, Energy, Water, etc.—and deliver an easy-to-understand view into the facility operations in real time. With this highly visual, graphically rich interface coupled with powerful analytics, building operations teams can act on timely information to optimize energy performance in virtually any system from HVAC to lighting to power.



Project Showcase: **Design Tech High School**

Collaborating with Oracle and the San Mateo Union School District

In January 2018, the innovative Design Tech High School (d.tech), a joint project between Oracle and the San Mateo Union High School District, opened its doors to 550 students, the first chartered public high school built by a publicly traded corporation on its campus. IBS was an integral member of the team in developing this facility.

The school, located on the Oracle campus in Redwood Shores, California, features as many innovative physical environments as the curriculum itself, from “maker spaces” and labs to classrooms, conference rooms, and common areas. The design process included hands-on workshops that identified goals and guiding principles for the new facility: flexible interiors, sustainability, and powerful technology integration. IBS spearheaded the integration of the major building systems, including Plumbing, HVAC, Lighting Controls, Real Time Metering and other subsystems. Integrating all these systems achieves a 360° view and enables approaching operations and maintenance from a holistic perspective, incorporating proactive responses.

This integrative approach was also well-suited to the hands-on, design-oriented curriculum itself, where the student body could participate in the ongoing building performance activities and incorporate performance data into course curriculum.

While the facility has been in operation for only a short time, the early performance data suggests the facility will easily meet its design goals including energy use 40% below comparable properties and potable water use 60% below industry averages. Additional objectives, such as onsite renewables, will be easily integrable into the energy mix on campus.



“Being able to scrutinize data at the strategic level is extremely important to the long-term success of this facility and sustainability program goals.

We need to be able to show our leadership the return on investment at any given time as well as educate students and employees alike about the everyday value of these programs.”

– George Denise, Director of Operations–RWS, Director of Sustainability-HQ, Oracle Corporation